

# Manifold with check valve

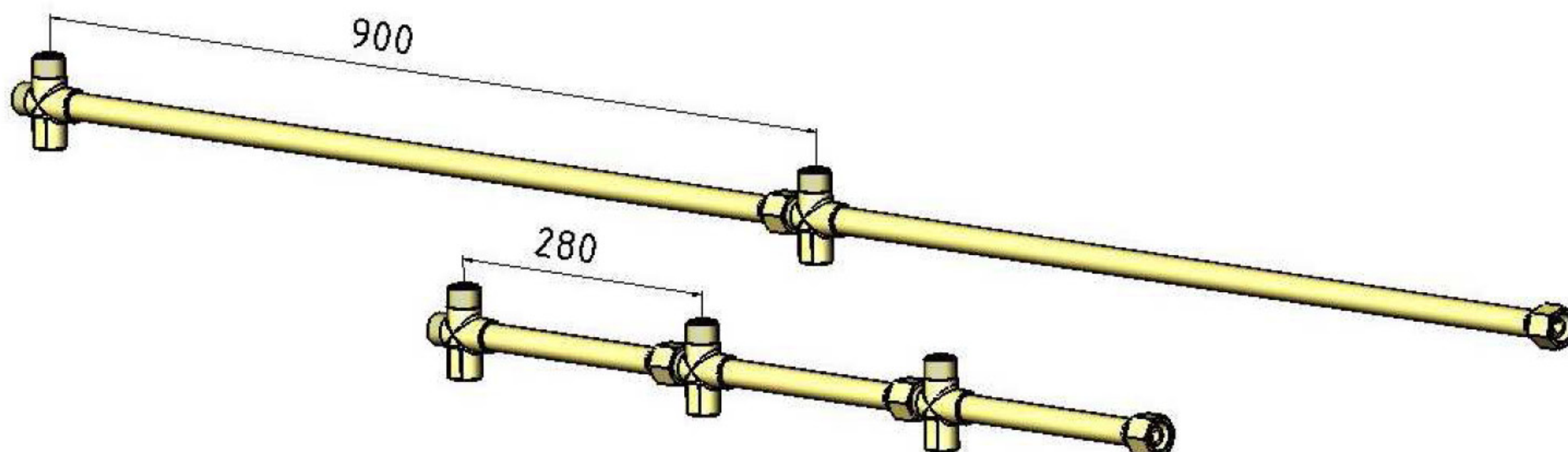


Illustration 1:

top: 2 x manifold with check valve, 1-fold – for bundle battery installations

bottom: 3 x manifold with check valve, 1-fold – for cylinder battery installations

## MANIFOLD WITH CHECK VALVE, 1-FOLD

The Modular system is stackable in any number.

Long version: (dimension 900 mm), for bundle battery installations.

Short version: (dimension 280 mm), for cylinder battery installations.

The integrated check valve with filter component provides safety and avoids an unintentional and not allowed decanting.

Applicable for the left or right side of a cylinder or bundle battery. By use of a metallic sealing connection according to DIN 8542, no additional sealing components between manifold and further equipment are needed.

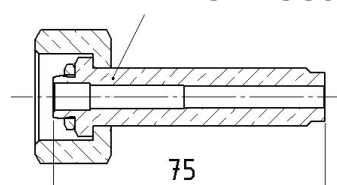
The oxygen compatibility is tested and approved by BAM - Berlin.

Functioning parts are replaceable as a service-kit.

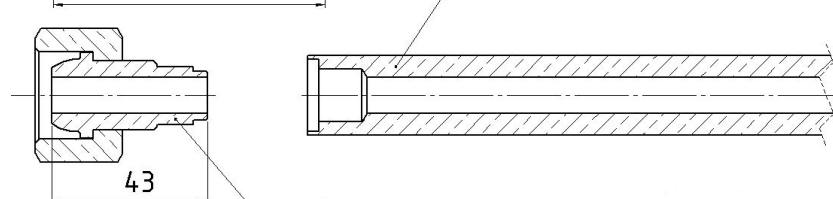
**Reference:** To connect the manifold to the gas supply, only our high pressure connections SLR are suitable.

## SELECTION OF CONNECTION PINS FOR CONNECTION TO FURTHER EQUIPMENT

Connection pin DIN 477 / No. 9



Manifold



Connection pin DIN 8542

A range of connection pins enables an individual connection to following cylinder stations.

Additional connections on request.

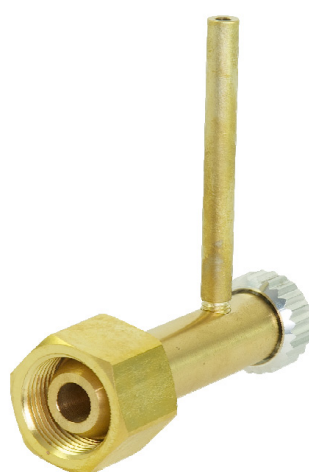
## OPTIONS AND ACCESSORIES

### Pressure relief valve, G3/4, DIN 8542

The pressure relief valve serves a safe pressure relief from the manifold system before an exchange of a cylinder or bundle.

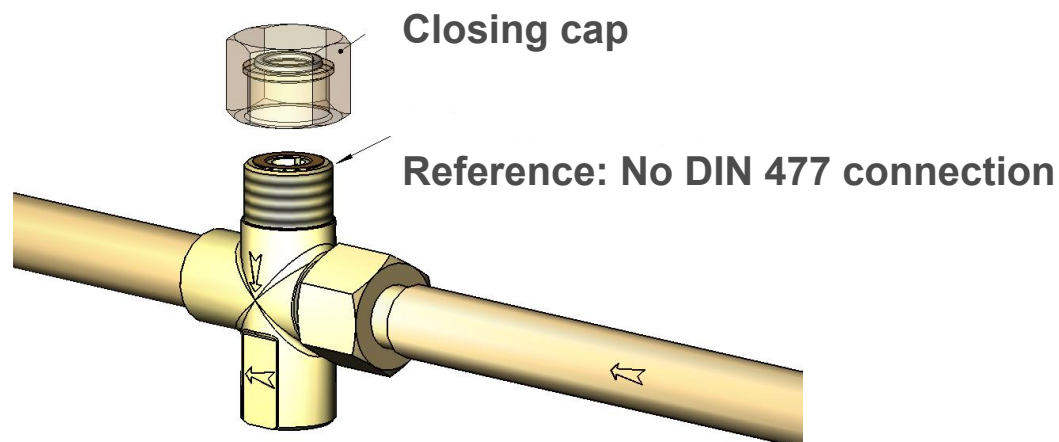
Oxygen compatibility approved by BAM – Berlin. The connected vent pipe enables a connection to a disposal conduit.

For each manifold system (one-way), one pressure relief valve is required.



# Manifold with CV

## CLOSING CAP FOR CHECK VALVE



For closing of check valve connections, which aren't connected to the gas supply temporarily.

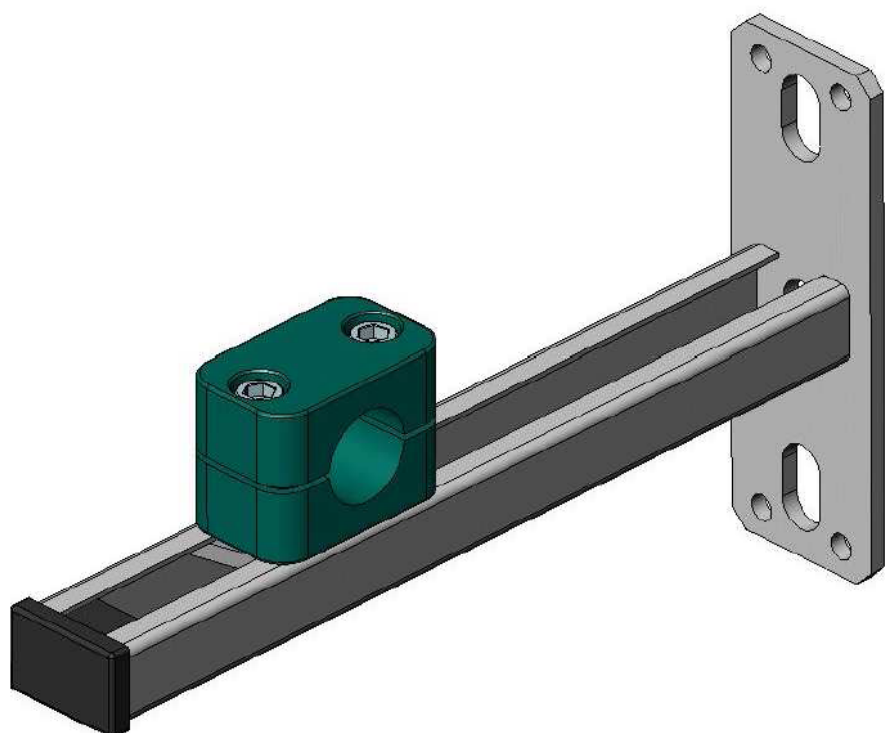
With an integrated O-ring to cover the check valves' seal surface.

### Reference – check valve

The inlet connection is no connection according to DIN 477 (see image 2).

Image 2

## WALL MOUNTING, 1-FOLD



The wall mounting is offered to provide a safe hold for the manifold system. The mounting is adjustable within three axes and guarantees an exact alignment of the manifold.

Required wall mountings per side:

- 1-fold = 1 mounting
- 2-fold = 1 mounting
- 3-fold = 2 mountings
- 4-fold = 2 mountings
- 5-fold = 3 mountings
- 6-fold = 3 mountings

## TECHNICAL DETAILS: MANIFOLD WITH CHECK VALVE:

Material:	brass	Nominal diameter, pipe:	ø 10 mm
Seat:	ø 8 mm	Pore size, filter:	40 µ
Gasket:	viton	Differential pressure:	0,5 bar

## REFERENCE

To arrange a complete and individual cylinder or bundle battery installation according to your requirements and wishes, please use our "Selection sheet for cylinder battery installation", respectively "Selection sheet for bundle battery installation".

## QUALITY STANDARD

The company Hornung is certified to DIN EN ISO 9001 and ISO 14001:2009. All single parts are manufactured, assembled and tested by in-house production. The finished parts are therefore under all criteria of German quality control with 100% final inspection.